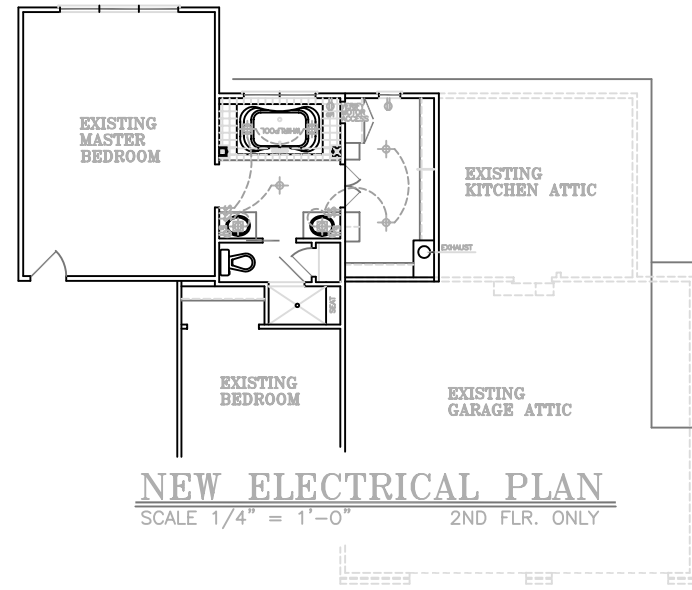
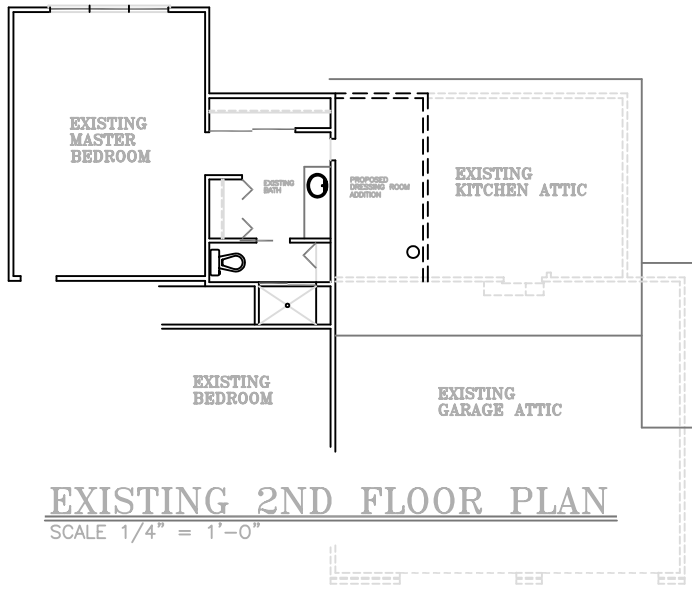


GENERAL ELECTRICAL SYMBOL LEGEND			
SYMBOL	DESCRIPTION	SYMBOL	DESCRIPTION
	110 V. OUTLET		EXHAUST FAN
	HALF SWITCHED 110 V. OUTLET		EXHAUST FAN/LIGHT COMBINATION
	WEATHERPROOF 110 V. OUTLET		PADDLE FAN/LIGHT FIXTURE
	GROUND FAULT 110 V. OUTLET		PADDLE FAN
	220 V. OUTLET		TWO-WAY SWITCH
	FLOOR 110 V. OUTLET		THREE-WAY SWITCH
	SURFACE MOUNT LIGHT		FOUR-WAY SWITCH
	RECESSED LIGHT		SMOKE DETECTOR (WALL)
	WALL MOUNT LIGHT		SMOKE DETECTOR (CEILING)
	PULL-CORD SURFACE MOUNT LIGHT		THERMOSTAT
	FLOOD LIGHT		CHIMES
	FLOURESCENT LIGHT		TELEPHONE
	TRACK LIGHT		HEAT LAMP
	UNDER COUNTER LIGHT		DEDICATED 110 V. OUTLET



Drawing date
03/10/08
Drawn by
S.J.
Reviewed by
Drawing code

revision date list

**CUSTOM
DESIGNED
FOR:**
Sample Bathroom
Addition Plan

690 Lily Cache Lane, Bolingbrook, IL 60440
www.HomeSourceBuilders.net
Home Source
Builders & Remodelers Office: (630) 759-7496 • sj@homesourcebuilders.net

Sheet no.
2
of 2